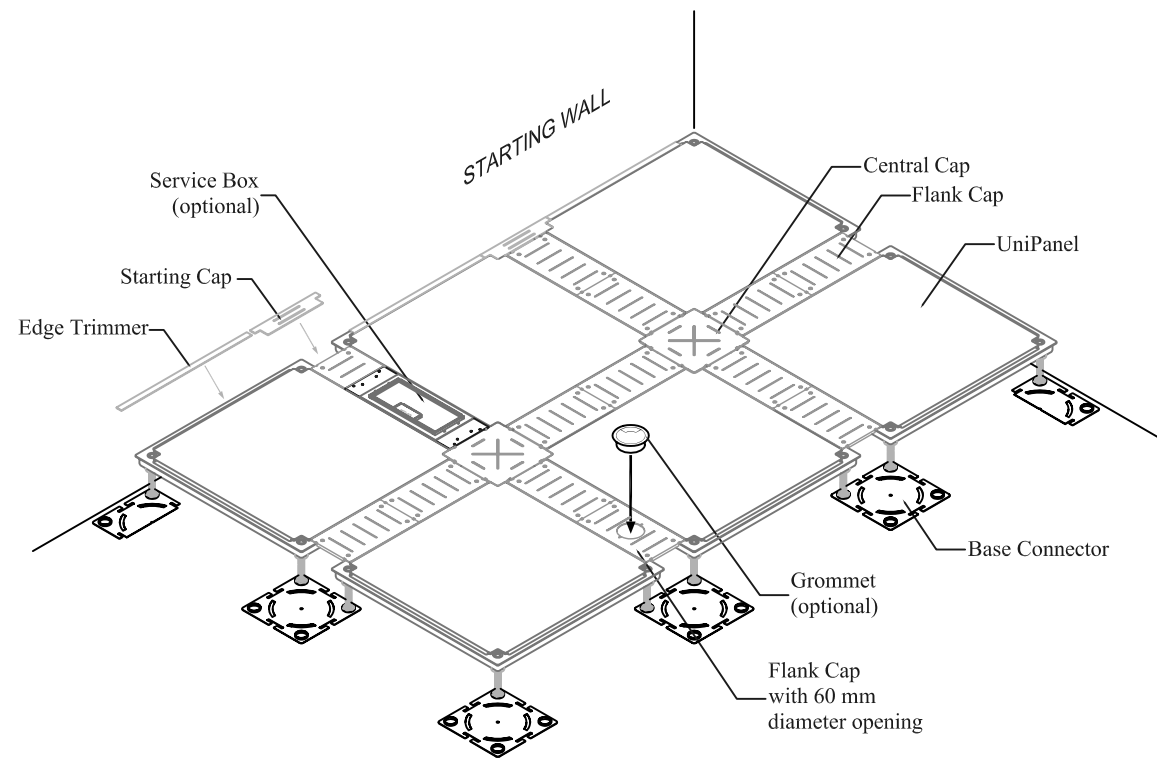
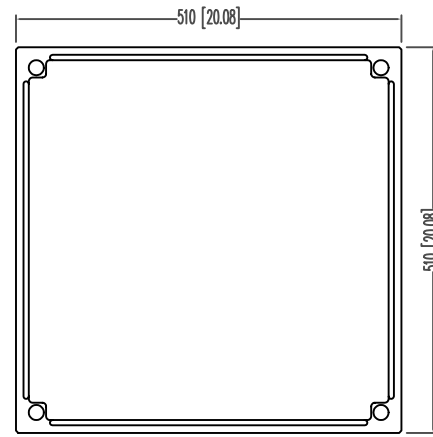


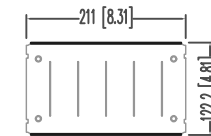
Netfloor CamassCrete CR1000W Series Low-Profile Cable Management Access Floor



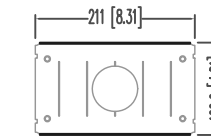
STANDARD COMPLETED UNITS



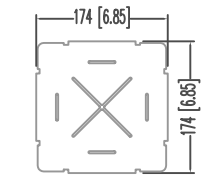
UniPanel



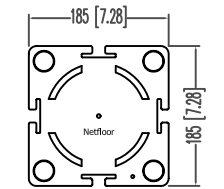
Flank Cap



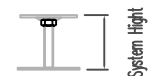
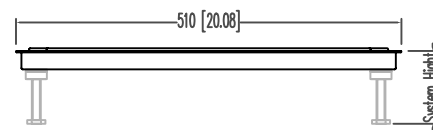
Flank Cap with 60 mm diameter opening (optional)



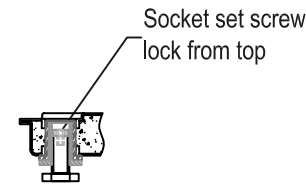
Central Cap



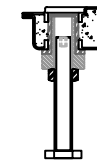
Base Connector



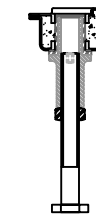
Perimeter Supporter



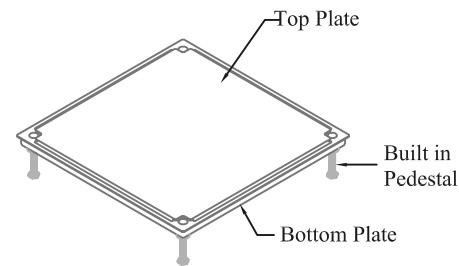
Super Low-profile FFH 40 - 60mm (1.57" - 2.36")



Low-profile FFH 60 - 115mm (2.36" - 4.53")



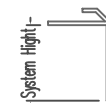
Low-profile FFH 110 - 200mm (4.33" - 7.87")



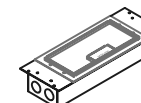
Starting Cap



Edge Trimmer



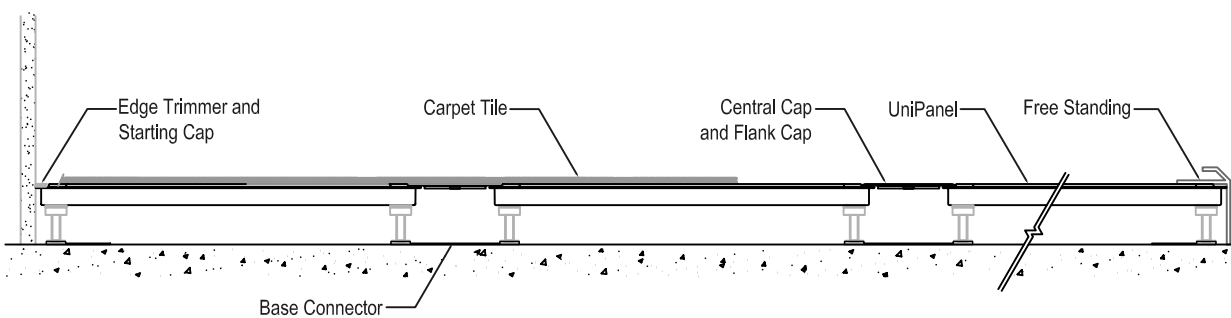
Free Standing



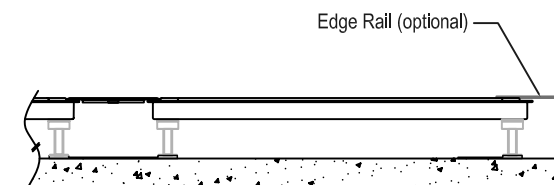
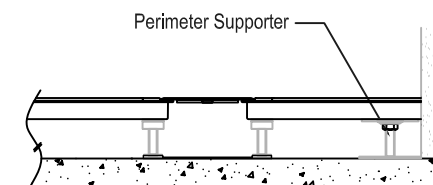
Service Box (optional)



AD518 Grommet (optional)



CROSS SECTION



CamassCrete CR1000W Access Floor Systems

- A. The system**
1. Netfloor CamassCrete CR1000W system
 2. system height: standard system height 40 mm to 200 mm (1.57" to 7.87")
 3. modular size: 600 X 600 mm (23.62" X 23.62"), each module consists of 1 access panel (UniPanel), 1 Base Connector, 1 Central Cap, and 4 Flank Caps.
 4. system weight: average 36 kg per sq. meter (7.36 LB per SF)
 5. manufacturer: Netfloor, Inc.
- B. Access Panels: steel cementitious panels, supported by 4 pedestal sets at corners. Access panels, when assembled, are self-standing.**
1. panel size: 510 mm X 510 mm (20.08" X 20.08")
 2. thickness: 28 mm (1.10")
 3. materials: steel cementitious welded panel, corrosion protection by powder coating.
 4. grooves: at four side of panel top, width 5 mm (0.19"), length 420 mm (16.54"), depth 8 mm (0.32").
 5. hexagon-shape holes at four corners, for built-in by pedestal sets.

- C. Pedestal sets: factory assembled pedestal sets consisted of socket-sets and threaded studs. Each stud has 4 mm (0.16") hexagon notch at top, which allows 4 mm (0.16") hex key-wrench, to adjust height above the access floor. Made of steel, corrosion protection by zinc plating.**
- D. Four pedestal sets built-in at each panel's four corners, to form a self-standing access panel.**
- E. Cable Trench Caps: Central and Flank Caps to cover the cable trenches**
- F. Central Caps: made of steel, size 6.85" X 6.85" (174 mm X 174 mm), thickness 0.09" (2.3 mm), 0.40" (10 mm) bend at four sides, to install, and cover, at intersection of cable trenches, protection against corrosion by electro-deposition.**
- G. Flank Caps: made of steel, size 8.31" X 4.80" (211 mm X 122 mm), thickness 0.09" (2.3 mm), 0.39" (10 mm) bend at two ends, to install, and cover, cable trenches at sides of access panels, protection against corrosion by electro-deposition.**
- H. Base Connectors: size 185 X 185 X 5 mm (7.28" X 7.28" X 0.20"), made of galvanized steel, or steel protected by electro-deposition.**
- I. Cable Trenches configuration: At time of installation, Base Connectors connected at access panels' pedestals at corners. Continuous connection at access panels' pedestals by Base Connectors, automatically forms reticulated, standard 90 mm (3.54") width cable trenches within every 600 mm (23.62").**
- J. Cable Trenches capacity:**
1. open width: 90 mm (3.54")
 2. inside width: 110 mm (4.33")
 3. clearance: system height minus 10 mm (0.39").